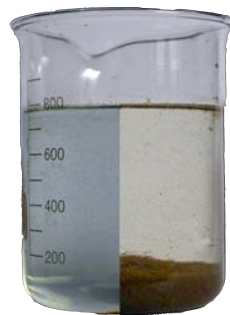


# EPOFLOC L-1R

**captures  
heavy metals!**

**EPOFLOC L-1R** is a high molecular weight chelating polymer, it forms strong, insoluble chelate complexes. Due to the long-chained basic molecular structure **EPOFLOC L-1R** forms large strong flocs, which separate and settle immediately. **EPOFLOC L-1R** can remove metals from complexes directly without having to pre-treat the



complex e.g. metal-EDTA complexes.

Metals can be removed to concentrations of <0.1mg/l with **EPOFLOC L-1R**.

$Pb^{2+}$

$Cd^{2+}$

$Cu^{2+}$

$Hg^{2+}$

$Zn^{2+}$

$Ni^{2+}$

$Co^{2+}$

$Ag^{+}$

$Cr^{3+/6+}$

$Me^{2+}$

Integrated Effluent Solutions Ltd.  
Unit 34 Enterprise City  
Meadowfield Avenue  
SPENNYMOOR  
Co Durham  
DL16 6JF  
United Kingdom

Tel.: +44 (0) 1388 827395  
Fax: +44 (0) 1388 816481  
e-mail: [sales@integratedeffluentsolutions.co.uk](mailto:sales@integratedeffluentsolutions.co.uk)  
web: [integratedeffluentsolutions.co.uk](http://integratedeffluentsolutions.co.uk)

# EPOFLOC L-1R

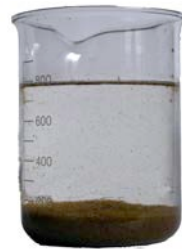
## Treatment of a Nickel containing waste-water with EPOFLOC L-1R:



pH-adjusted waste-water prior



and after the addition of EPOFLOC L-1R.



after 5' sedimentation-time!

The required quantity of EPOFLOC L-1R to remove a heavy metal is calculated as follows:

$$\text{Qty. EPOFLOC L-1R (g)} = \frac{\text{dissolved metal in effluent(g)}}{1 \text{ equivalent of the metal (g)}} \times 250$$

$$1 \text{ equivalent (g)} = \frac{\text{Atomic-weight of metal (g)}}{\text{number of chemical bonds}}$$

Integrated Effluent Solutions Ltd.  
Unit 34 Enterprise City  
Meadowfield Avenue  
SPENNYMOOR  
Co Durham  
DL16 6JF  
United Kingdom

Tel.: +44 (0) 1388 827395  
Fax: +44 (0) 1388 816481  
e-mail: [sales@integratedeffluentsolutions.co.uk](mailto:sales@integratedeffluentsolutions.co.uk)  
web: [integratedeffluentsolutions.co.uk](http://integratedeffluentsolutions.co.uk)

# EPOFLOC L-1R

## Chemical and physical properties:

appearance:	Brown transparent liquid
Specific gravity at 25°C:	1,25 - 1,35 g/cm <sup>3</sup>
pH(10% solution):	11,5 - 13,5
Viscosity (25°C)(mPa s):	10 - 60
Temperature-stability:	-20°C - 180°C
Applicable pH-range:	3-10
Molecular weight (g/mol):	3.000 - 5.000
Selectivity for metal-ions:	Hg <sup>2+</sup> >Ag <sup>+</sup> >Cu <sup>2+</sup> >Pb <sup>2+</sup> >Zn <sup>2+</sup> >Ni <sup>2+</sup> >Cd <sup>2+</sup> >Fe <sup>3+</sup> >Mn <sup>2+</sup>

## Typical waste-water-treatment with EPOFLOC L-1R:

- adjust waste-water to the optimal treatment-pH
- addition of EPOFLOC L-1R (10 - 20 min. reaction-time)
- addition of small amounts of FeCl<sub>3</sub> or PAC. (to eliminate over-dosed EPOFLOC L-1R and to improve flocculation and water-clarity)
- addition of flocculant (if necessary)

*Heavy metals captured by EPOFLOC L-1R will not be found in eluate of the formed slurry. Even not when the employed water has a pH of 3.*

<b>Packing:</b>	200 kg netto	one-way-plastic-drum
	1.000 kg netto	one-way-Container

Integrated Effluent Solutions Ltd.  
Unit 34 Enterprise City  
Meadowfield Avenue  
SPENNYMOOR  
Co Durham  
DL16 6JF  
United Kingdom

Tel.: +44 (0) 1388 827395  
Fax: +44 (0) 1388 816481  
e-mail:[sales@integratedeffluentsolutions.co.uk](mailto:sales@integratedeffluentsolutions.co.uk)  
web:[integratedeffluentsolutions.co.uk](http://integratedeffluentsolutions.co.uk)